



PROCESS & SELECTION GUIDE
SUBDIVISION LIGHTING

Warren RECC
RURAL ELECTRIC COOPERATIVE CORPORATION

Subdivision Lighting Process

General Steps

We are pleased that you are considering Subdivision Lighting in your development. Warren Rural Electric Cooperative Corporation (WRECC) takes pride in our ability to serve and assist you with the available options. As you consider the style and practicality of your system, please bear in mind that we are available to help.

The Subdivision Lighting Program at WRECC is setup to be very straightforward. However for a person evaluating this process for the first time – it may seem quite complicated. Certain questions will require answers and various choices will need consideration. This outline is designed to be a concise description of the process. It will start you down the path. And while there will be decisions along the way, hopefully it will provide a few answers to some of the opening questions.

Steps:

1. Warren Rural Electric will gladly discuss your ideas for Subdivision Lighting without any precondition. However, for the official process to begin a Subdivision Plat must be recorded at the local Planning Commission (minimum of three (3) lots are required). The recorded Plat must then be supplied to WRECC.
2. A preliminary design will be produced. This will involve several decisions. Most notably the selection of fixture from our collection of standard lighting.
3. WRECC will formulate a Lighting Agreement – based on the standards approved by the local County Government (applies to Warren, Simpson, and Logan Counties). This process has several factors to consider, depending on your circumstances.
 - a. If there are existing Property Owners, the County Ordinance requires a Petition to be completed.
 - b. If no previously installed Transformers exist, WRECC will be required to install the necessary units to service the Lights. This will involve a Transformer Fee.
 - c. There is a related Initial Assessment Fee. The selected installation date impacts this cost.
4. The signed agreement is required to be submitted to the County Government for approval. The time frame for this portion of the process is dependent on the County Government's schedule – the document requires two (2) readings.
5. The Developer/Owner may be responsible for certain related facilities. Conduit and Pole Foundations (if applicable) must be installed no later than ten (10) weeks prior to the prescribed installation date.
6. Upon WRECC inspection and acceptance of the conduit installation, the light fixtures can be ordered.
7. The Lighting Agreement will stipulate an installation date. WRECC works hard to meet this contractual arrangement and puts forth every effort to satisfy that pledge. However, Light construction is dependent on approved conduit installation, material orders, and unanticipated work load.

100 Watt High Pressure Sodium (HPS) Cobra Head Light

WRECC Unit Number

MS-10-1 (100W)

MS-15-1 (150W)

Light Identification and Manufacturer

Cobra Head Fixture for Wood Poles

Black Housing

American Electric Lighting

Pole Identification and Manufacturer

Attachment to Existing

Approximate Unit Cost

\$650.00



250 Watt High Pressure Sodium (HPS) Mongoose Light

WRECC Unit Number
MI-25-MGA (250W)

Light Identification and Manufacturer
Mongoose Fixture for Wood Poles
Black Housing
Gooseneck Arm
American Electric - Holophane

Pole Identification and Manufacturer
Attachment to Existing

Approximate Unit Cost
\$1,025.00



100 Watt High Pressure Sodium (HPS) Cobra Head Light

WRECC Unit Number

MS-10-2 (100W)

MS-15-2 (150W)

Light Identification and Manufacturer

Cobra Head Fixture

Black Housing

American Electric Lighting

Pole Identification and Manufacturer

35'-0" Fiberglass (Direct Burial)

Shakespeare Composite Structures

Approximate Unit Cost

\$1,630.00



100 Watt High Pressure Sodium (HPS) Scroll Top Light with Fiberglass Pole

WRECC Unit Number

MS-10-5 (100W)

MS-15-5 (150W)

Light Identification and Manufacturer

Scroll Top Decorative

Black Housing

American Lighting

Pole Identification and Manufacturer

24'-0" Fiberglass (Direct Burial)

Shakespeare Composite Structures

Approximate Unit Cost

\$1,170.00



100 Watt High Pressure Sodium (HPS) Granville Light with Fluted Pole

WRECC Unit Number

MS-17-2A

MS-17-2B

Light Identification and Manufacturer

Utility Granville Series

Black Housing

Holophane - American Electric

Pole Identification and Manufacturer

12'-0" Cast Aluminum, 4" Fluted, Black
Holophane, Worthington Series
(MS-17-2A)

14'-0" Cast Aluminum, 5" Fluted, Black
Holophane, Worthington Series
(MS-17-2B)

Approximate Unit Cost

\$1,825.00 (MS-17-2A)

\$1,995.00 (MS-17-2B)

Concrete Base required - See 'UF-5-12'



100 Watt High Pressure Sodium (HPS) Twin Granville Light with Fluted Pole

WRECC Unit Number
MS-17-2T

Light Identification and Manufacturer
Utility Granville Series
Black Housing
Holophane - American Electric

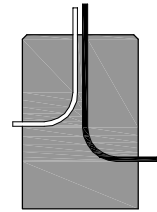
Pole Identification and Manufacturer
14'-0" Cast Aluminum, 5" Fluted, Black
Holophane, Worthington Series

Approximate Unit Cost
\$3,415.00

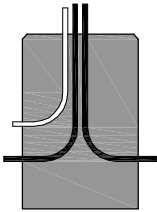
Concrete Base required - See 'UF-5-12'



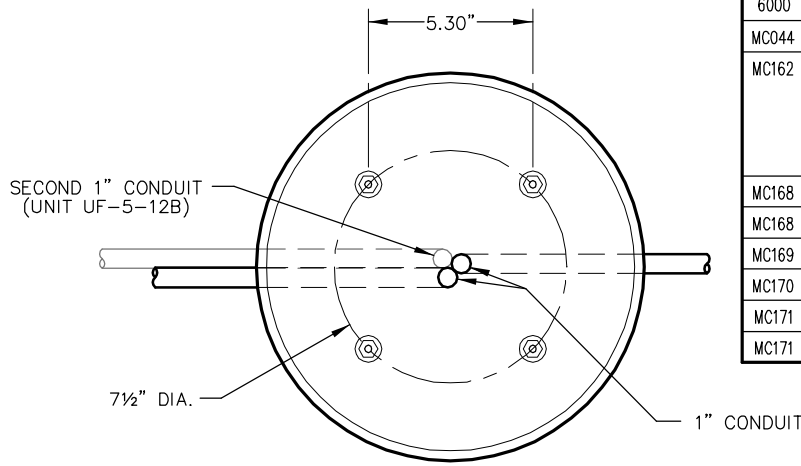
CONDUITS



UF-5-12A

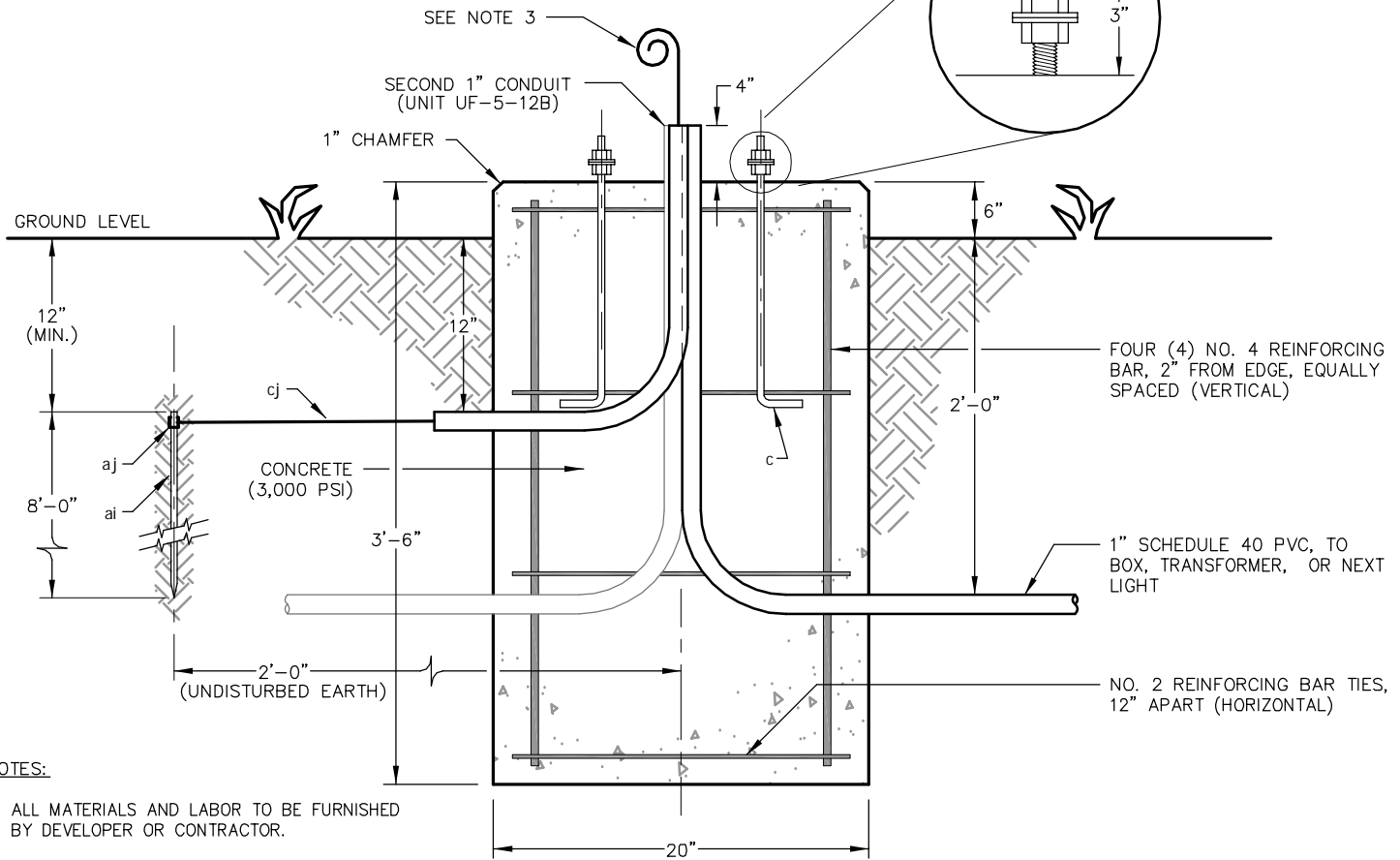


UF-5-12B



PLAN VIEW

CODE	ITEM	NO. REQ'D	MATERIAL
2150	ai	1	Rod, Ground, 5/8" diameter
6000	cj	As req'd	Ground wire, No. 4 bare copper
MC044	aj	1	Clamp, Ground Rod Wire
MC162	c	4	Bolt, Anchor 3/4" X 1 1/4" 10 NC Galvanized Steel, ASTM A576, 50,000 PSI min. yield, 8" of threaded end galvanized per ASTM A153, with 2 galvanized steel hex nuts and 2 washers per bolt
MC168	16'		#2 Concrete Rebar
MC168	10'		#4 Concrete Rebar
MC169	0.283		Concrete (Cubic Yards)
MC170	1		Concrete Form, SonoTube (20")
MC171	2		1" Schedule 40 PVC Elbow (UF-5-12A)
MC171	3		1" Schedule 40 PVC Elbow (UF-5-12B)



ELEVATION VIEW

NOTES:

1. ALL MATERIALS AND LABOR TO BE FURNISHED BY DEVELOPER OR CONTRACTOR.
2. W.R.E.C.C. DITCH INSPECTOR TO APPROVE BEFORE CONCRETE POUR AND AT COMPLETION.
3. EXTEND BARE Cu. GROUND WIRE 18" (MIN) FROM TOP OF FOUNDATION.
4. FOUNDATION TOP TO BE LEVEL AND FINISH TO BE SMOOTH AND FREE OF VOIDS. SONOTUBE TO EXTEND A MINIMUM OF 12" BELOW GROUND GRADE.
5. ALIGN ANCHOR BOLTS TO BE PARALLEL TO STREET.

Warren RECC
 RURAL ELECTRIC COOPERATIVE CORPORATION

951 FAIRVIEW AVENUE • BOWLING GREEN, KY 42102 • 270:842-6541

Designed by A. FLETCHER	Checked by SLG	STREET LIGHT STANDARD FOUNDATION FOR 14 FT. AND BELOW POLES
Approved by	Drawn by WMB	Autocad File: G:\DATA\CAD\SPECIFICATIONS\WRECC\UF-5-12.DWG
Date 05/23/2007	Scale NOT TO SCALE	Drawing Name: UF-5-12

REV	DATE	REVISION
5	10/01/08	CHANGED OFFSET DISTANCE FOR GROUND ROD (RLY)
4	09/29/08	REVISED CONDUIT TO 1", ADDED SPEC TO ANCHOR BOLTS (WMB)
3	08/19/08	ADDED NOTE 5 AND "3,000 PSI" TO CONCRETE LEADER
2	11/16/07	CHANGED "FIXTURE PATTERN" TO "TYPE OF POLE" IN BOLT CIRCLE CHART
1	09/04/07	CHANGED "A" DIAMETER FROM 7" TO 7 1/2"

NAME: UF-5-12.dwg DATE: JAN 12, 2009 TIME: 7:56 AM