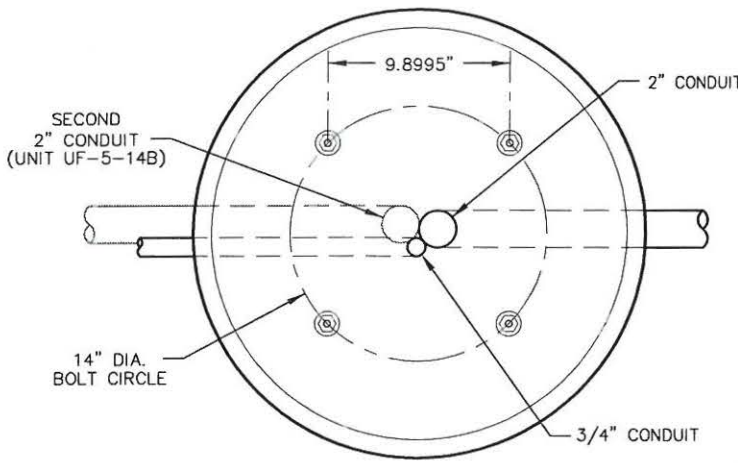
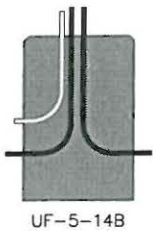
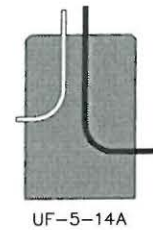
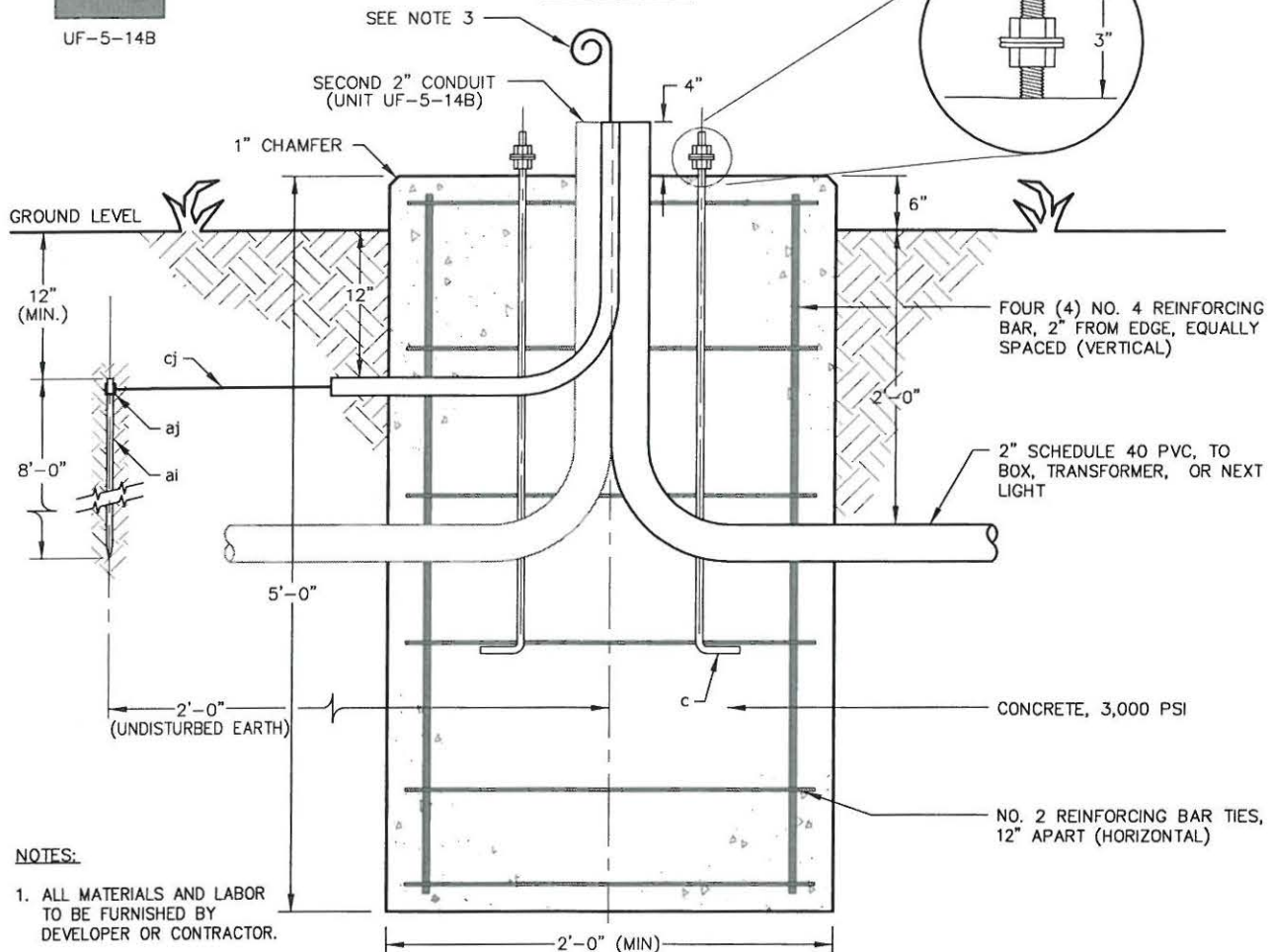


CONDUITS

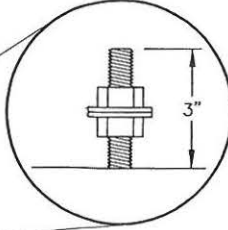


PLAN VIEW



ELEVATION VIEW

CODE	ITEM	NO. REQ'D	MATERIAL
2150	ai	1	Rod, Ground, 5/8" diameter
6000	cj	As req'd	Ground wire, No. 4 bare copper
MC044	aj	1	Clamp, Ground Rod Wire
MC167	c	4	Bolt, Anchor 1" x 36" 8 NC Galvanized Steel, ASTM A576, 50,000 PSI min. yield, 8" of threaded end galvanized per ASTM A153, with 2 galvanized steel hex nuts and 2 washers per bolt
MC168		28'	#2 Concrete Rebar
MC168		20'	#4 Concrete Rebar
MC169		0.407	Concrete (Cubic Yards)
MC170		1	Concrete Form, SonoTube (24")
MC171		1	2" Schedule 40 PVC Elbow (UF-5-14A)
MC171		2	2" Schedule 40 PVC Elbow (UF-5-14B)
MC171		1	3/4" Schedule 40 PVC Elbow



NOTES:

1. ALL MATERIALS AND LABOR TO BE FURNISHED BY DEVELOPER OR CONTRACTOR.
2. W.R.E.C.C. DITCH INSPECTOR TO APPROVE BEFORE CONCRETE POUR AND AT COMPLETION.
3. EXTEND BARE Cu. GROUND WIRE 18" (MIN) FROM TOP OF FOUNDATION.
4. FOUNDATION TOP TO BE LEVEL AND FINISH TO BE SMOOTH AND FREE OF VOIDS. SONOTUBE TO EXTEND A MINIMUM OF 12" BELOW GROUND GRADE.
5. ALIGN ANCHOR BOLTS TO BE PARALLEL TO STREET.



951 FAIRVIEW AVENUE • BOWLING GREEN, KY 42102 • 270:842-6541

Designed by A. FLETCHER	Checked by SLG	STREET LIGHT STANDARD FOUNDATION FOR 30 FT. AND ABOVE POLES
Approved by	Drawn by WMB	Autocad File: G:\DATA\CAD\SPECIFICATIONS\WRECC\UF-5-14
Date 05/23/2007	Scale NOT TO SCALE	Drawing Name: UF-5-14

REV	DATE	REVISION
5	01/12/09	DEFINED DISTANCE CONDUIT SHOULD EXTENT ABOVE CONCRETE BASE (WMB)
4	10/01/08	CHANGED OFFSET DISTANCE GROUND ROD (RLY)
3	09/29/08	REVISED ANCHOR BOLT REFERENCE (WMB)
2	08/19/08	ADDED NOTE 5 AND "3,000 PSI" TO CONCRETE LEADER (WMB)
1	07/23/08	CHANGED HEIGHT ABOVE GROUND LEVEL FROM 6" TO 4" MAX. (WMB)

NAME: UF-5-14.dwg DATE: JAN 12, 2009 TIME: 7:47 AM