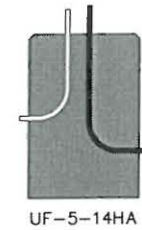
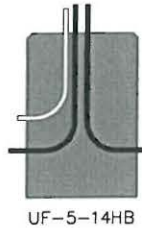


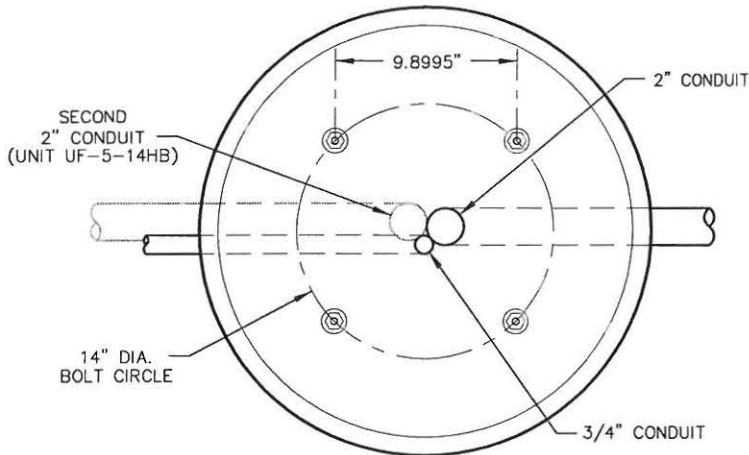
CONDUITS



UF-5-14HA

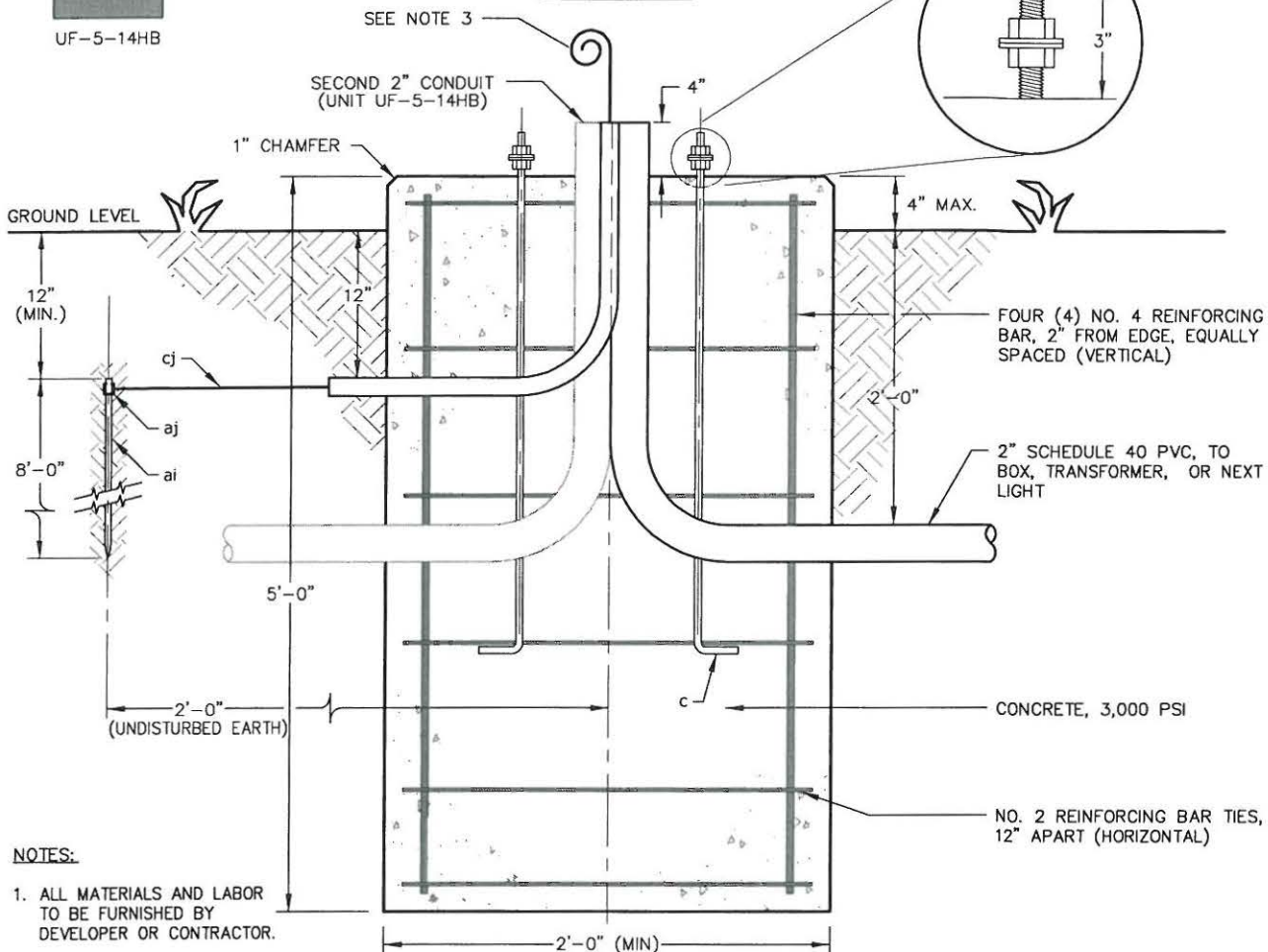


UF-5-14HB



PLAN VIEW

CODE	ITEM	NO. REQ'D	MATERIAL
2150	ai	1	Rod, Ground, 5/8" diameter
6000	cj	As req'd	Ground wire, No. 4 bare copper
MC044	aj	1	Clamp, Ground Rod Wire
MC167	c	4	Bolt, Anchor 1" x 36" 8 NC Galvanized Steel, ASTM A576, 50,000 PSI min. yield, 8" of threaded end galvanized hex nuts and 2 washers per bolt
MC168		28'	#2 Concrete Rebar
MC168		20'	#4 Concrete Rebar
MC169		0.407	Concrete (Cubic Yards)
MC170		1	Concrete Form, Sonotube (24")
MC171		1	2" Schedule 40 PVC Elbow (UF-5-14HA)
MC171		2	2" Schedule 40 PVC Elbow (UF-5-14HB)
MC171		1	3/4" Schedule 40 PVC Elbow



ELEVATION VIEW

NOTES:

1. ALL MATERIALS AND LABOR TO BE FURNISHED BY DEVELOPER OR CONTRACTOR.
2. W.R.E.C.C. DITCH INSPECTOR TO APPROVE BEFORE CONCRETE POUR AND AT COMPLETION.
3. EXTEND BARE Cu. GROUND WIRE 18" (MIN) FROM TOP OF FOUNDATION.
4. FOUNDATION TOP TO BE LEVEL AND FINISH TO BE SMOOTH AND FREE OF VOIDS. SONOTUBE TO EXTEND A MINIMUM OF 12" BELOW GROUND GRADE.
5. ALIGN ANCHOR BOLTS TO BE PARRALLEL TO STREET.

Warren RECC
RURAL ELECTRIC COOPERATIVE CORPORATION
 951 FAIRVIEW AVENUE • BOWLING GREEN, KY 42102 • 270:842-6541

Designed by SLG	Checked by SLG	STREET LIGHT STANDARD FOUNDATION FOR 30 FT. AND ABOVE POLES - HWY PROJECTS
Approved by	Drawn by WMB	Autocad File: G:\DATA\CAD\SPECIFICATIONS\WRECC\UF-5-14H
Date 08/19/2008	Scale NOT TO SCALE	Drawing Name: UF-5-14H

REV	DATE	REVISION
3	01/12/09	DEFINED DISTANCE CONDUIT TO EXTENT ABOVE CONCRETE BASE (WMB)
2	10/01/08	CHANGED OFFSET DISTANCE GROUND ROD (RLY)
1	09/29/08	REVISED ANCHOR BOLT REFERENCE (WMB)

NAME: UF-5-14H.dwg DATE: JAN 12, 2009 TIME: 7:51 AM