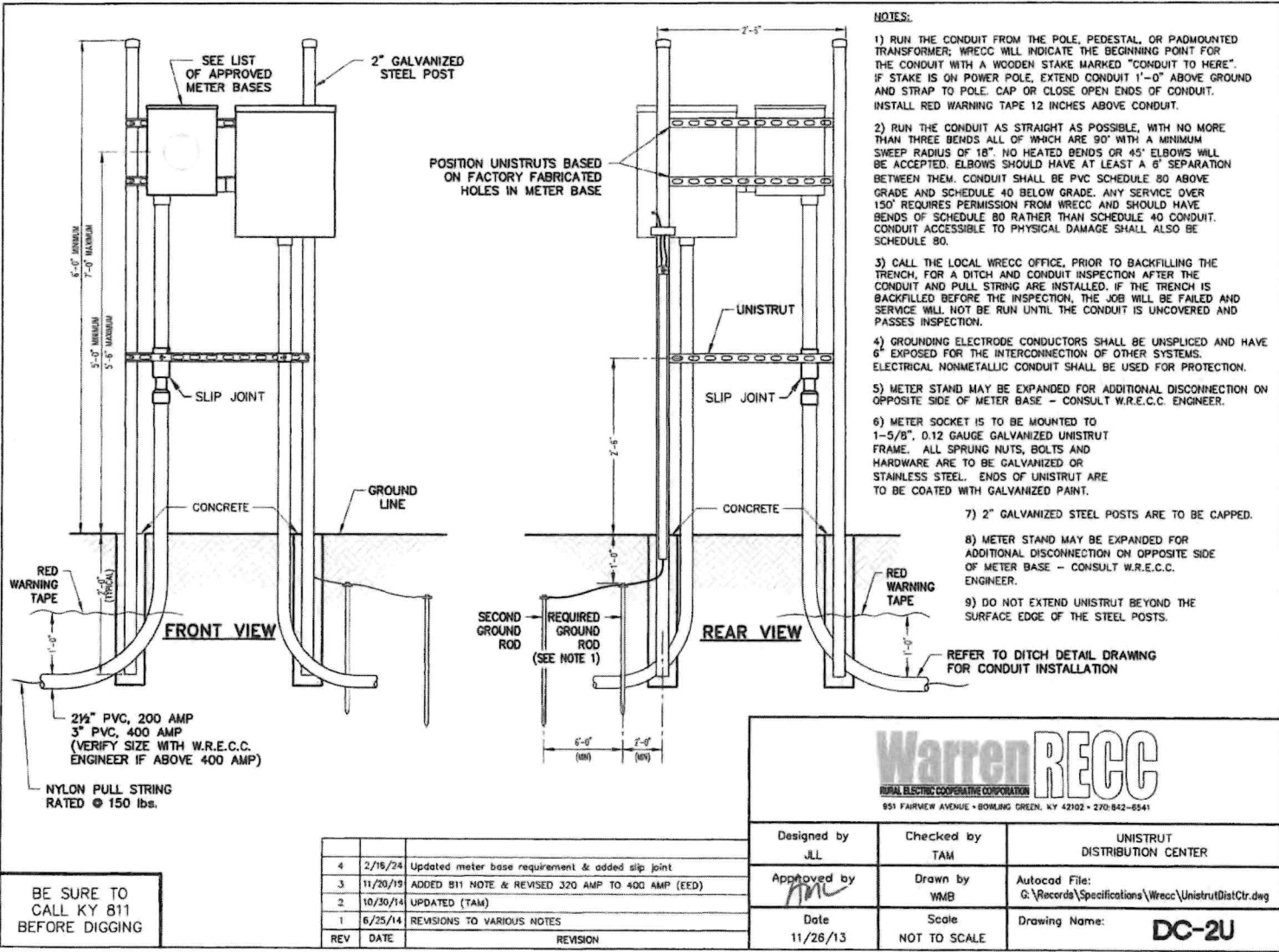



NAME: UnistrutDistCtr.dwg DATE: MAR 26, 2024 TIME: 3:54 PM



- NOTES:**
- 1) RUN THE CONDUIT FROM THE POLE, PEDESTAL, OR PADMOUNTED TRANSFORMER; WRECC WILL INDICATE THE BEGINNING POINT FOR THE CONDUIT WITH A WOODEN STAKE MARKED "CONDUIT TO HERE". IF STAKE IS ON POWER POLE, EXTEND CONDUIT 1'-0" ABOVE GROUND AND STRAP TO POLE. CAP OR CLOSE OPEN ENDS OF CONDUIT. INSTALL RED WARNING TAPE 12 INCHES ABOVE CONDUIT.
  - 2) RUN THE CONDUIT AS STRAIGHT AS POSSIBLE, WITH NO MORE THAN THREE BENDS ALL OF WHICH ARE 90° WITH A MINIMUM SWEEP RADIUS OF 18". NO HEATED BENDS OR 45° ELBOWS WILL BE ACCEPTED. ELBOWS SHOULD HAVE AT LEAST A 6" SEPARATION BETWEEN THEM. CONDUIT SHALL BE PVC SCHEDULE 80 ABOVE GRADE AND SCHEDULE 40 BELOW GRADE. ANY SERVICE OVER 150' REQUIRES PERMISSION FROM WRECC AND SHOULD HAVE BENDS OF SCHEDULE 80 RATHER THAN SCHEDULE 40 CONDUIT. CONDUIT ACCESSIBLE TO PHYSICAL DAMAGE SHALL ALSO BE SCHEDULE 80.
  - 3) CALL THE LOCAL WRECC OFFICE, PRIOR TO BACKFILLING THE TRENCH, FOR A DITCH AND CONDUIT INSPECTION AFTER THE CONDUIT AND PULL STRING ARE INSTALLED. IF THE TRENCH IS BACKFILLED BEFORE THE INSPECTION, THE JOB WILL BE FAILED AND SERVICE WILL NOT BE RUN UNTIL THE CONDUIT IS UNCOVERED AND PASSES INSPECTION.
  - 4) GROUNDING ELECTRODE CONDUCTORS SHALL BE UNSPLICED AND HAVE 6" EXPOSED FOR THE INTERCONNECTION OF OTHER SYSTEMS. ELECTRICAL NONMETALLIC CONDUIT SHALL BE USED FOR PROTECTION.
  - 5) METER STAND MAY BE EXPANDED FOR ADDITIONAL DISCONNECTION ON OPPOSITE SIDE OF METER BASE - CONSULT W.R.E.C.C. ENGINEER.
  - 6) METER SOCKET IS TO BE MOUNTED TO 1-5/8", 0.12 GAUGE GALVANIZED UNISTRUT FRAME. ALL SPRUNG NUTS, BOLTS AND HARDWARE ARE TO BE GALVANIZED OR STAINLESS STEEL. ENDS OF UNISTRUT ARE TO BE COATED WITH GALVANIZED PAINT.
  - 7) 2" GALVANIZED STEEL POSTS ARE TO BE CAPPED.
  - 8) METER STAND MAY BE EXPANDED FOR ADDITIONAL DISCONNECTION ON OPPOSITE SIDE OF METER BASE - CONSULT W.R.E.C.C. ENGINEER.
  - 9) DO NOT EXTEND UNISTRUT BEYOND THE SURFACE EDGE OF THE STEEL POSTS.
- REFER TO DITCH DETAIL DRAWING FOR CONDUIT INSTALLATION

**BE SURE TO CALL KY 811 BEFORE DIGGING**

REV	DATE	REVISION
4	2/16/24	Updated meter base requirement & added slip joint
3	11/20/19	ADDED 811 NOTE & REVISED 320 AMP TO 400 AMP (EED)
2	10/30/14	UPDATED (TAM)
1	6/25/14	REVISIONS TO VARIOUS NOTES



**Warren RECC**  
RURAL ELECTRIC COOPERATIVE CORPORATION  
951 FAIRVIEW AVENUE • BOWLING GREEN, KY 42102 • 270-842-8541

Designed by JLL	Checked by TAM	UNISTRUT DISTRIBUTION CENTER
Approved by <i>TAM</i>	Drawn by VMB	Autocad File: G:\Records\Specifications\Wrecc\UnistrutDistCtr.dwg
Date 11/26/13	Scale NOT TO SCALE	Drawing Name: <b>DC-2U</b>