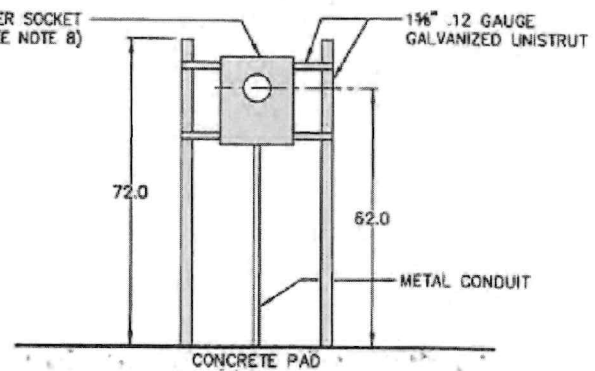
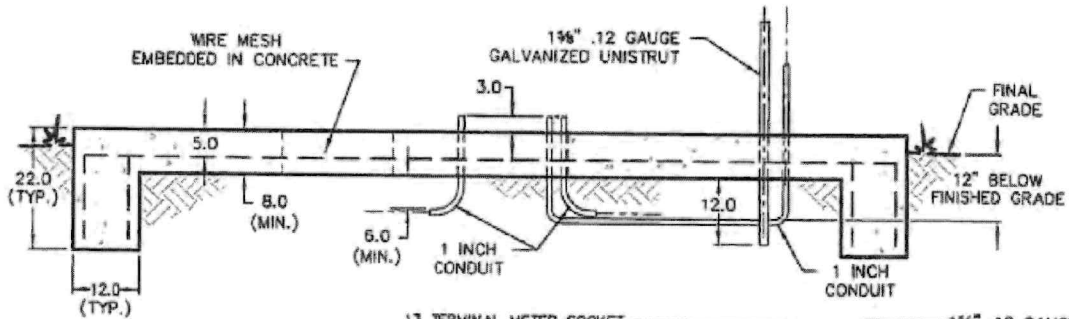
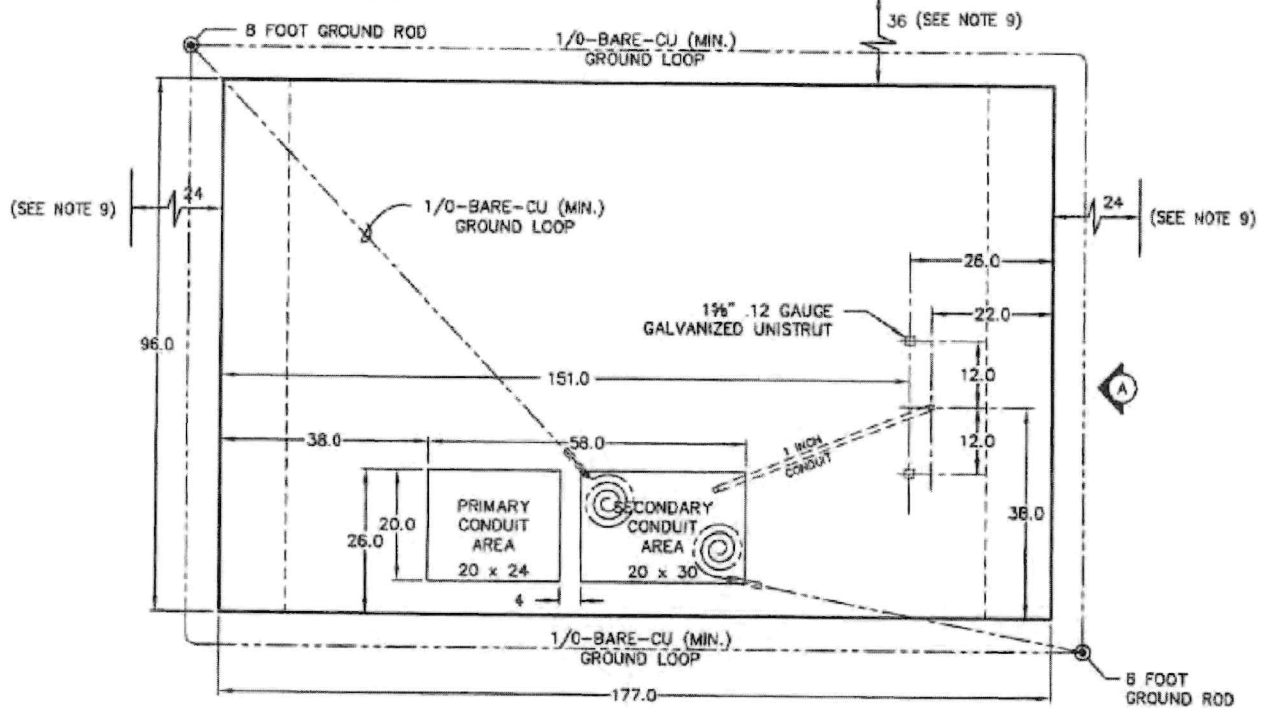


NAME: TX-PM-PAD_A.dwg DATE: APR 23, 2021 TIME: 8:42 AM



VIEW A
NOT TO SCALE

NOTES:

- 1.) ALL DIMENSIONS ARE IN INCHES.
- 2.) GROUND CONDUCTORS MUST BE A 1/0-BARE-CU AND EXTEND FOUR FEET (4') ABOVE THE SURFACE OF THE PAD AND MUST BE BROUGHT UP THROUGH THE SECONDARY CONDUIT AREA IN A ONE INCH (1") PVC CONDUIT.
- 3.) CONNECTIONS TO GROUND RODS MUST BE CADWELDED.
- 4.) METER SOCKET IS TO BE MOUNTED TO 1-5/8" .12 GAUGE GALVANIZED UNISTRUT FRAME. ALL SPRING NUTS, BOLTS AND HARDWARE ARE TO BE GALVANIZED OR STAINLESS STEEL. ENDS OF UNISTRUT ARE TO BE COATED WITH GALVANIZED PAINT.
- 5.) INSPECTION IS REQUIRED BY W.R.E.C.C. BEFORE CONCRETE IS POURED.
- 6.) LOCAL COUNTY ORDINANCES MAY REQUIRE SPILL CONTAINMENT. CONTAINMENT TO BE CONSTRUCTED OUTSIDE PAD DIMENSIONS.
- 7.) ALL NON-PVC CONDUIT TO BE RIGID GALVANIZED STEEL (RGS).
- 8.) METER SOCKET PROVIDED BY W.R.E.C.C. - INSTALLED BY CONTRACTOR.
- 9.) CLEARANCE TO BE MAINTAINED FROM EDGE OF PAD TO ANY OBSTRUCTION.

Warren RECC
RURAL ELECTRIC COOPERATIVE CORPORATION
951 FAIRVIEW AVENUE • BOWLING GREEN, KY 42102 • 270.842-5541

REV	DATE	REVISION
5	03/09/21	MODIFIED MULTIPLE DIMENSIONS (JLL)
4	06/25/15	EXPANDED TO CONDUIT AREAS (JLL)
3	06/01/13	UPDATED NOTE 6, INSTRUCTIONS ON CONSTRUCTING SPILL CONTAINMENT. (WMB)
2	03/30/12	ADJUSTED HEIGHT OF METER SOCKET, ADDED NOTE 8 (WMB)
1	02/22/11	UPDATED NOTES 3 & 4, CHANGED TO GALVANIZED UNISTRUT (WMB)

Designed by SLG	Checked by SLG	150-2500 KVA PADMOUNT TRANSFORMER PAD - NO BARRIER WALL
Approved by <i>AML</i>	Drawn by WMB	Autocad File: TX-PM-PAD_A.DWG
Date 11/23/2010	Scale 3/8" = 1'-0"	Drawing Name: TX-PAD(A)