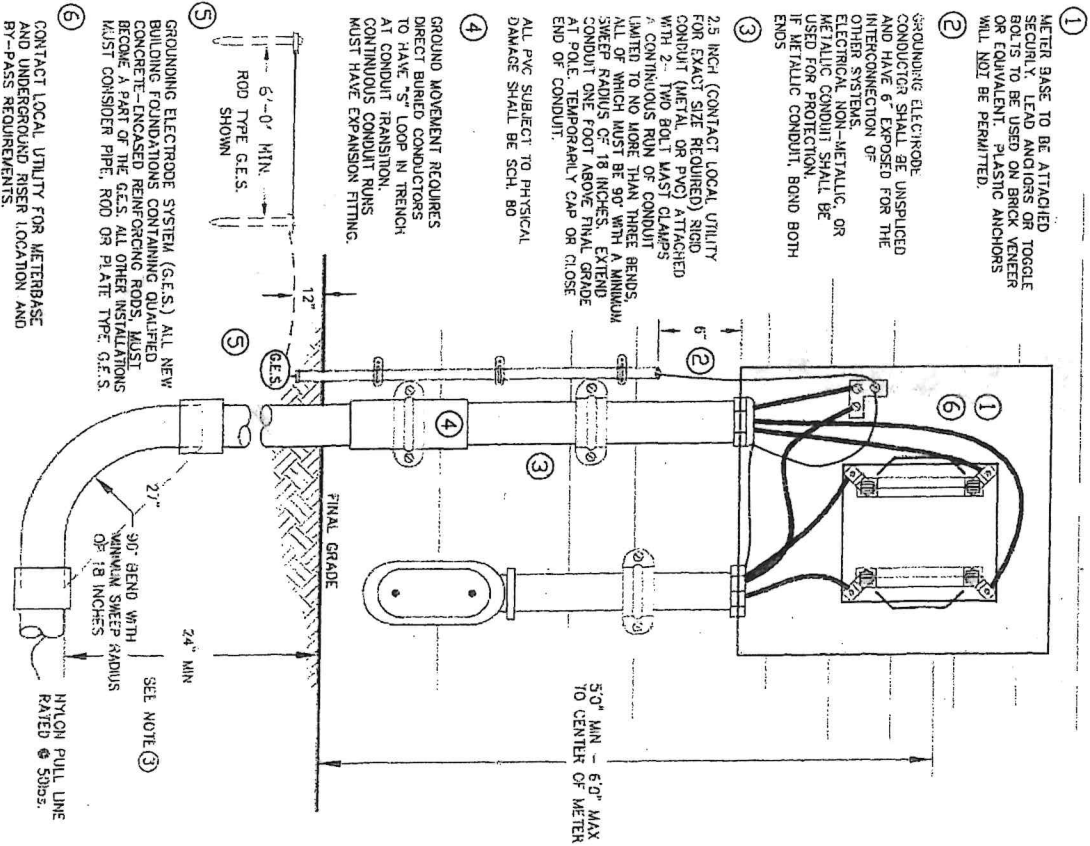


SERVICE — UNDERGROUND

200 AMP MAXIMUM



In item (3) above, note that the conduit must have no more than three bends all of which must be 90 degrees with a minimum sweep radius of 18 inches.

Guidelines for Installing

UNDERGROUND SECONDARY SERVICE



Corporate Office:
 951 Fairview Avenue
 Bowling Green, KY 42101
 270-842-6541

Franklin District Office - 270-586-3443
 Leitchfield District Office - 270-259-3161
 Morgantown District Office - 270-526-3384

In preparation for installation of Underground Secondary Service, **it is the member's responsibility to:**

- install a 2 1/2-inch Schedule 40 PVC conduit for a 200-amp service **OR** a 3-inch Schedule 40 PVC conduit for a 320-amp service;
 - run the conduit from the pole, pedestal, or pad-mounted transformer; Warren RECC will indicate the beginning point for the conduit with a wooden stake marked "conduit to here";
 - run the conduit **as straight as possible**, with **no more than three bends all of which are 90 degrees** with a **minimum sweep radius of 18 inches**. **No heated bends or 45-degree elbows will be accepted. Elbows should have at least a 6-foot separation between them.** Any service over 150 feet requires permission from Warren RECC and should have bends of Schedule 80 rather than Schedule 40 conduit. Conduit accessible to physical damage shall also be Schedule 80.
 - bury the conduit along Warren RECC-approved route to a minimum of 2 feet; (Exception: Within the city limits of Franklin, the depth is to be 4 feet.) **If the proper depth cannot be met, contact Warren RECC for further instructions.**
 - call the local Warren RECC office, **prior to backfilling the trench, for a ditch and conduit inspection after the conduit and pull string are installed. If the trench is backfilled before this inspection, the job will be failed and service will not be run** until the conduit is uncovered and passes inspection;
 - use a meter base specified and supplied by Warren RECC in sizes from 100- to 400-amp, single-phase, and 200- to 400-amp, 3-phase.
- Underground Secondary service will be provided at no additional cost under the following conditions:
- Member installs the below-grade conduit system in accordance with the specifications outlined above.
 - The Underground Secondary Service does not require the use of a secondary pedestal.
 - The Underground Secondary Service length, as measured along the ground path of the conduit in linear feet and as shown on the work order, does not

exceed:
150 feet when primary extensions are required, and
250 feet when primary extensions are not required.

If the structure can be served by an extension of less than 250 feet, but the member desires one that is longer, primary facilities will be extended at the member's expense (see ADM 51a). In these cases, the "no-cost" provisions for 1,000 feet of overhead and 750 feet of underground primary do not apply.

A member applying for a service extension will:

- sign an easement granting Warren RECC access to all Warren RECC-owned facilities located on the member's property, within or outside established electrical easements;
- hold Warren RECC harmless for reasonable and customary property damage resulting from this extension of service and future maintenance on installed facilities;
- be given a wooden stake to place where they want the meter located. This stake needs to be located by the customer before Warren RECC can approve location and begin design work. **Failure to locate stake before field staking begins will result in delays of service being connected, also a trip charge of \$45 per hour will be assessed and applied to work order expense after the second trip is made.**
- notify Warren RECC of any change in the location of the stake after the location has been approved. Failure to do so may result in additional charges to the member.
- **assure that Cooperative's overhead or underground service terminates in an approved customer-owned meter pedestal or WRECC-owned meter pole. In no instance, shall a meter base be mounted on a mobile home.**

Any deviations found when WRECC service crews arrive to connect the service will result in a delay until the violations are corrected. Any costs involved, including labor and scrapped materials used during the first construction attempt, re-staking, or additional charges as outlined by the staking technician in accordance with Warren RECC's policy, will be at the member's expense.