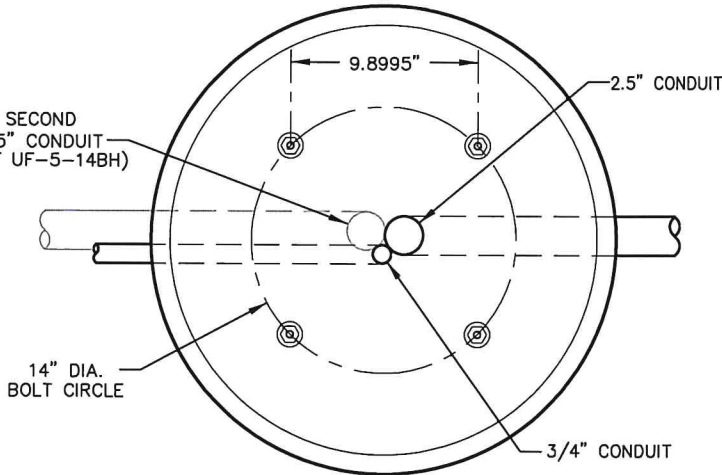
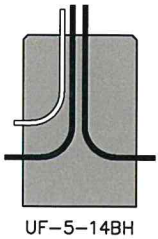
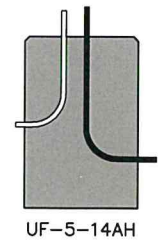
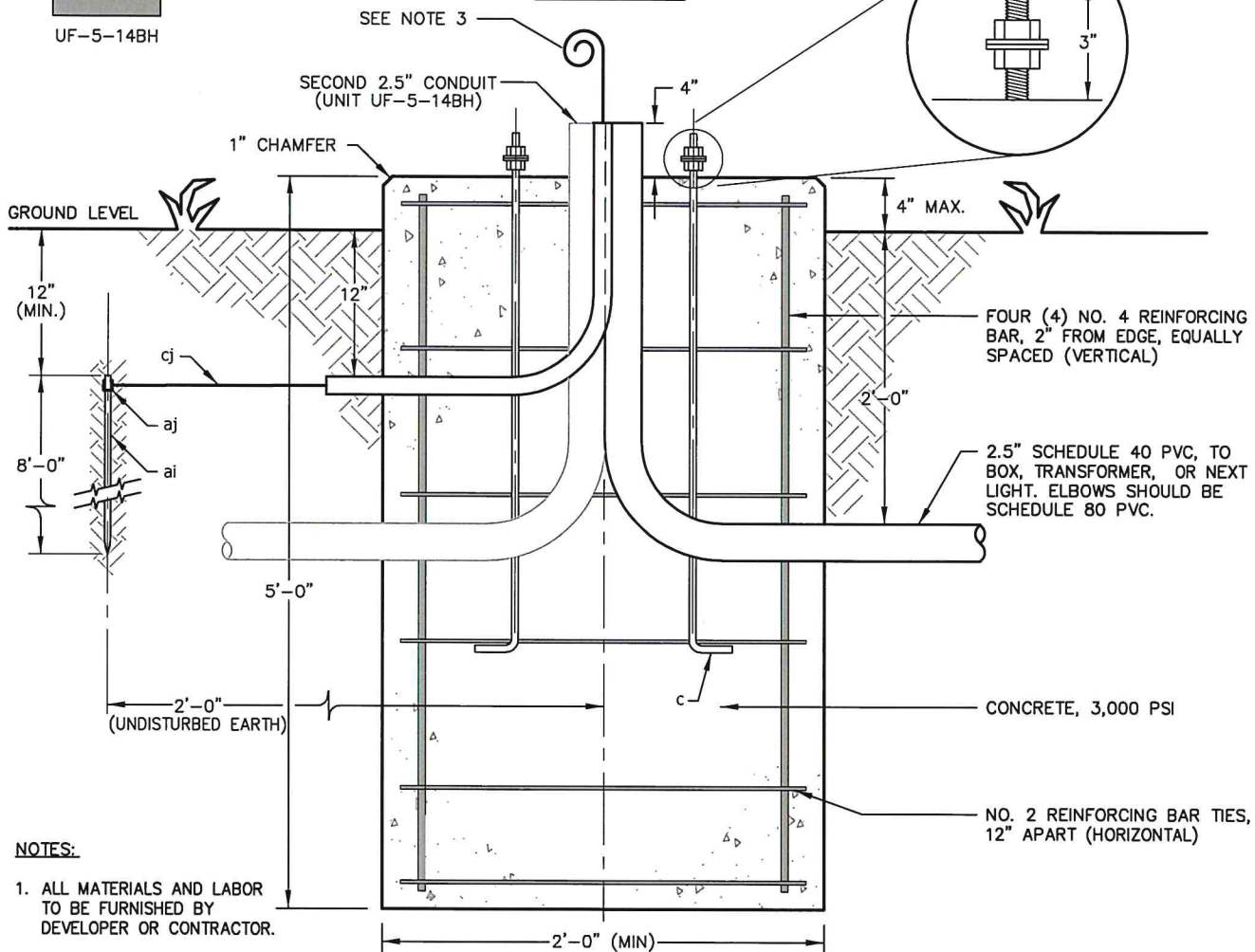


**CONDUITS**



**PLAN VIEW**

| CODE  | ITEM  | NO. REQ'D | MATERIAL   |
|-------|-------|-----------|--|
| 2150  | ai    | 1         | Rod, Ground, 5/8" diameter   |
| 6000  | cj    | As req'd  | Ground wire, No. 4 bare copper   |
| MC044 | aj    | 1         | Clamp, Ground Rod Wire   |
| MC167 | c     | 4         | Bolt, Anchor 1" x 3/8" 8 NC Galvanized Steel, ASTM A576, 50,000 PSI min. yield, 8" of threaded end galvanized per ASTM A153, with 2 galvanized steel hex nuts and 2 washers per bolt |
| MC168 | 28'   |           | #2 Concrete Rebar  |
| MC168 | 20'   |           | #4 Concrete Rebar  |
| MC169 | 0.407 |           | Concrete (Cubic Yards)   |
| MC170 | 1     |           | Concrete Form, SonaTube (24")  |
| MC171 | 1     |           | 2.5" Schedule 80 PVC Elbow (UF-5-14AH)   |
| MC171 | 2     |           | 2.5" Schedule 80 PVC Elbow (UF-5-14BH)   |
| MC171 | 1     |           | 3/4" Schedule 40 PVC Elbow   |



**ELEVATION VIEW**

**NOTES:**

1. ALL MATERIALS AND LABOR TO BE FURNISHED BY DEVELOPER OR CONTRACTOR.
2. W.R.E.C.C. DITCH INSPECTOR TO APPROVE BEFORE CONCRETE POUR AND AT COMPLETION.
3. EXTEND BARE Cu. GROUND WIRE 18" (MIN) FROM TOP OF FOUNDATION.
4. FOUNDATION TOP TO BE LEVEL AND FINISH TO BE SMOOTH AND FREE OF VOIDS. SONOTUBE TO EXTEND A MINIMUM OF 12" BELOW GROUND GRADE.
5. ALIGN ANCHOR BOLTS TO BE PARRALLEL TO STREET.



| REV | DATE     | REVISION   |
|-----|----------|--|
| 5   | 2/1/21   | CHANGED 2" CONDUIT TO 2.5" CONDUIT & SCH 40 TO 80 PVC (CRD)                              |
| 4   | 05/31/16 | RENAMED REF. TO 2 OPTIONS TO MATCH NISC (UF-5-14HA TO UF-5-14AH, UF-5-14HB TO UF-5-14BH) |
| 3   | 01/12/09 | DEFINED DISTANCE CONDUIT TO EXTENT ABOVE CONC. BASE (WMB)                                |
| 2   | 10/01/08 | CHANGED OFFSET DISTANCE GROUND ROD (RLY)   |
| 1   | 09/29/08 | REVISED ANCHOR BOLT REFERENCE (WMB)  |

|                           |                       |   |
|---------------------------|-----------------------|---|
| Designed by<br>SLG        | Checked by<br>SLG     | STREET LIGHT STANDARD FOUNDATION<br>FOR 30 FT. AND ABOVE POLES - HWY PROJECTS |
| Approved by<br><i>Amc</i> | Drawn by<br>WMB       |   |
| Date<br>08/19/2008        | Scale<br>NOT TO SCALE | Autocad File:<br>G:\DATA\CAD\SPECIFICATIONS\WRECC\UF-5-14H                    |
|                           |                       | Drawing Name:<br><b>UF-5-14H</b>  |

NAME: UF-5-14H.dwg DATE: FEB 01, 2021 TIME: 1:57 PM